

# 2019 STORMWATER CALENDAR

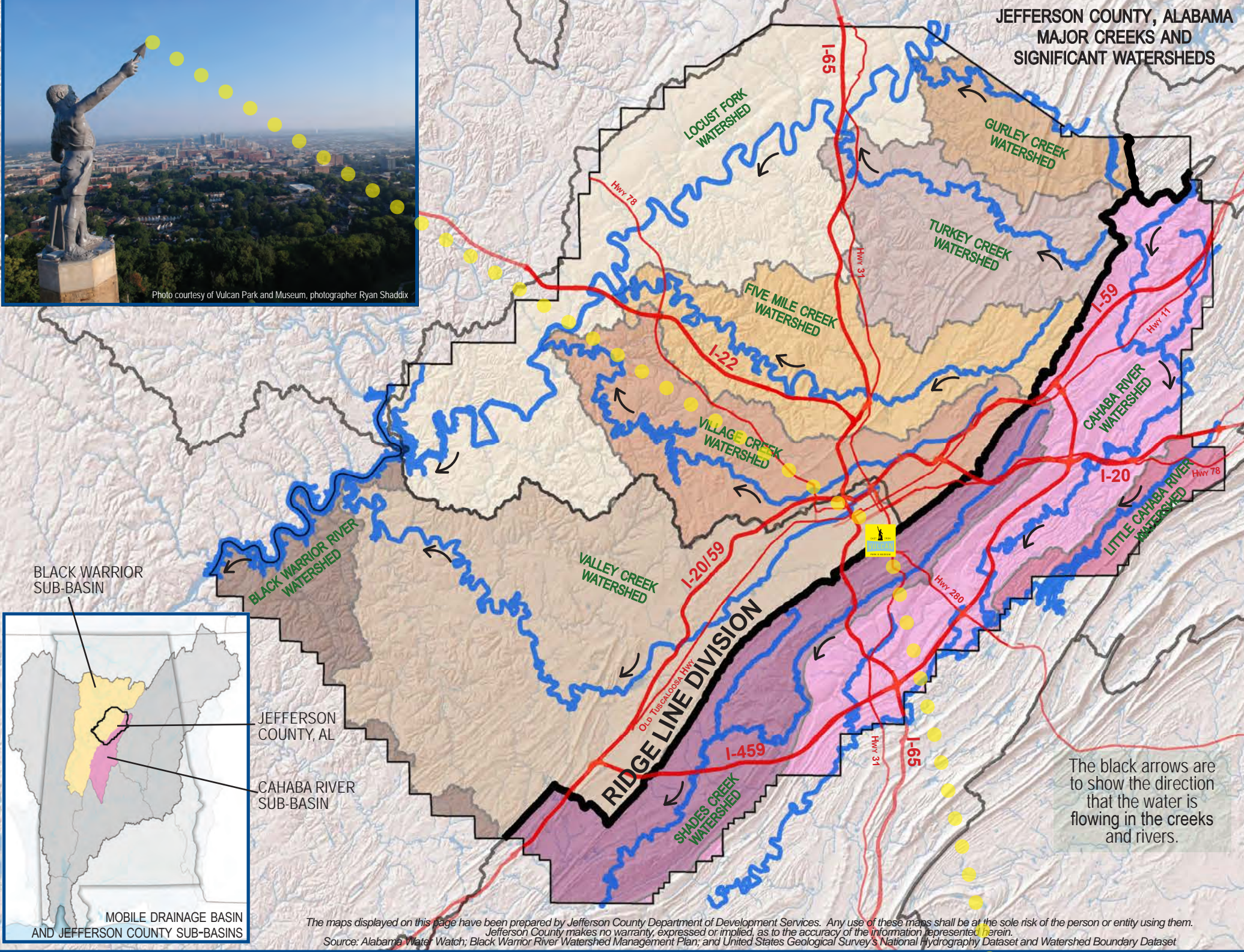


Photo courtesy of Vulcan Park and Museum, photographer Ryan Shaddix



Photo courtesy of Vulcan Park and Museum, photographer Ryan Shaddix

JEFFERSON COUNTY, ALABAMA  
MAJOR CREEKS AND  
SIGNIFICANT WATERSHEDS



The black arrows are to show the direction that the water is flowing in the creeks and rivers.

The maps displayed on this page have been prepared by Jefferson County Department of Development Services. Any use of these maps shall be at the sole risk of the person or entity using them. Jefferson County makes no warranty, expressed or implied, as to the accuracy of the information represented herein. Source: Alabama Water Watch; Black Warrior River Watershed Management Plan; and United States Geological Survey's National Hydrography Dataset and Watershed Boundary Dataset

A drainage **BASIN** is a large area of land drained by rivers. Large Basins are made up of Sub-Basins. **SUB-BASINS** are made up of Watersheds. A **WATERSHED** is a land area whose elevation causes water to flow to a common waterway. Neither Basins nor Watersheds follow State or Municipal Boundaries. They are defined by mountain ridges and valleys.

**Threats to Watersheds and Waterways**

Clean water in our local rivers, creeks, lakes, and streams is important to human, animal, and environmental health. In a natural environment, rainwater has many opportunities to sink into the ground or slowly flow into a waterbody. Because we have built more and more roads, homes, and businesses over the years, rainwater has fewer chances to infiltrate. This process creates large amounts of rainwater moving very quickly across hard surfaces, through the drainage system, and into water bodies. Fast moving water can pick up many pollutants from the ground.

These pollutants can come from numerous sources, including motor oil, fertilizers, pesticides, heavy metals, eroded soil, sewage, pet waste, and litter. Industrial and commercial operations also can contribute to water pollution. These pollutants regularly enter our waterbodies when they are picked up and carried by rain. Large amounts of fast moving water can overwhelm drainage systems. When this occurs, streets flood and stream banks erode.

Alabama establishes levels for the maximum amount of pollutants that can enter each waterbody. Local Stormwater Program staff monitor these water bodies to ensure that they do not exceed the maximum level. If they do, measures are taken to identify the source of the pollutant and reduce or eliminate it.

Below are actions to consider that help protect our local water quality.

-   
Sweep up excess yard chemicals.
-   
Read and follow label directions.
-   
Fix and repair vehicle leaks.
-   
Pick up and dispose of pet waste.
-   
Recycle used cooking oil.
-   
Secure loose items before driving.
-   
Cover bare soil to prevent erosion.
-   
Participate in a litter cleanup.



Photo courtesy of Vulcan Park and Museum, photographer Ryan Shaddix

Overlooking the sites where coal, iron ore, and limestone were mined and a booming manufacturing sector was born, Vulcan proudly towers over the 1,119 square miles that make up the Birmingham-Jefferson County Metro Area. The abundance of clean, fresh water was a crucial factor in Birmingham's dramatic rise as a mining and manufacturing center during the late 1800s. The water that enabled that growth remains a vital component to the future progress and the vitality of our region. Vulcan Park sits atop Red Mountain, which is part of the Red Mountain Divide, a southern extension of the Appalachian Mountains and the Cumberland Plateau. This geological feature creates two main drainage Sub-Basins: the Black Warrior Sub-Basin and the Cahaba Sub-Basin. The Vulcan statue faces the Black Warrior Sub-Basin and the Cahaba Sub-Basin is behind Vulcan. Within these two major Sub-Basins are nine Watersheds: Black Warrior River, Cahaba River, Five Mile Creek, Gurley Creek, Little Cahaba River, Shades Creek, Turkey Creek, Valley Creek, and Village Creek.

# WILDWOOD PRESERVE

## Shades Creek Watershed (Cahaba River Sub-Basin)

[Learn more about Sub-Basins and Watersheds on the last page!](#)

The Wildwood Preserve is a 51-acre nature preserve nestled between I-65 and Shades Creek. It is owned and managed by Freshwater Land Trust, whose mission is the acquisition and stewardship of lands that enhance water quality and preserve open space. The Preserve is home to a variety of native wildflowers, as well as the marbled and spotted salamanders, and includes a half mile nature trail (one way). Future plans will add additional trails and connect the Preserve to the Shades Creek Greenway, a popular section of the growing Red Rock Trail System.

### Attractions:

.5 mile nature trail (1 way); Shades Creek

### Special events:

January - Friends of Shades Creek  
Salamander Festival ([www.shadescreek.org](http://www.shadescreek.org))

### Biggest threat to the watershed:

Stormwater runoff

### Solutions implemented:

Habitat for native species; buffer for  
Shades Creek

*Photo, Freshwater Land Trust*



To report a sanitary sewer overflow call 205-942-0681.

Within the City of Birmingham call 311 to report environmental and drainage issues.

Within unincorporated Jefferson County call 205-325-5792 to report suspected water pollution; call 205-582-6555 to report illegal dumping.

# JANUARY 2019

**STORMWATER TIP:  
Properly maintain your  
vehicles and lawn  
equipment!**

If just one drop of oil leaked from each vehicle in Jefferson County, it would pollute 16 million gallons of water! That is enough water to fill 24 olympic sized swimming pools.

Oil and other vehicle fluids pollute our creeks and rivers.

Please use cat litter to soak up spills; sweep up and dispose of in the trash.

Please wash vehicles on grassy areas rather than in your driveway or on the street.

SUNDAY	MONDAY	TUESDAY	WEDNESDAY	THURSDAY	FRIDAY	SATURDAY
		1 New Year's Day	2	3	4	5
6	7	8	9	10	11	12
13	14	15	16	17	18	19
20	21 Martin Luther King Jr. Day	22	23	24	25	26
27	28	29	30	31		
			<b>SPECIAL EVENTS:</b> Don't forget this month is the Salamander Festival! Recycle your Christmas trees at the Birmingham Zoo. More information is available at <a href="http://www.birminghamzoo.com">www.birminghamzoo.com</a> .			



JEFFERSON COUNTY CONSERVATION DISTRICT

# VULCAN PARK AND MUSEUM

## Shades Creek Watershed (Cahaba Sub-Basin); Valley Creek Watersheds (Black Warrior Sub-Basin)

[Learn more about Sub-Basins and Watersheds on the last page!](#)

The Vulcan Park sits atop Red Mountain, which is part of the Red Mountain divide, a southern extension of the Appalachian Mountains and the Cumberland Plateau. The Vulcan statue was built in 1904 as Birmingham's winning entry in the World's Fair held in St. Louis, Missouri. Vulcan, the world's largest cast iron statue standing at 65 feet tall, stands atop a pedestal with an observation deck which can be reached via 159 steps - or an elevator ride. The surrounding Vulcan Park is a 10 acre green space. It includes walking trails and contains an interactive history museum. The park provides a 360° view of the surrounding area.

### Attractions:

4th of July fireworks: *Thunder on the Mountain*; Kiwanis Vulcan Trail which is part of the Red Rock Trail System

**Biggest threat to the watershed:**  
Trash and littering; invasive plants

*Photo courtesy of Vulcan Park and Museum,  
photographer, Ryan Shaddix*



Open daily 10:00am - 6:00pm; Observation Tower until 10pm | 1701 Valley View Drive, 35209 | 205-933-1409 | [www.visitvulcan.com](http://www.visitvulcan.com)

To report a sanitary sewer overflow call 205-942-0681.

Within the City of Birmingham call 311 to report environmental and drainage issues.

Within unincorporated Jefferson County call 205-325-5792 to report suspected water pollution; call 205-582-6555 to report illegal dumping.

# FEBRUARY 2019

**STORMWATER TIP:  
Properly transport and  
dispose of trash and  
recyclable materials!**

Trash that falls out or  
blows out of vehicles or  
trailers becomes litter!

Litter pollutes our creeks  
and rivers. Prevent litter  
by securing all items before  
driving and please do not  
toss anything out of  
automobile windows.

Visit [recycleAL.org](http://recycleAL.org) to find  
facilities that will accept  
hard to dispose of items.

Coordinate or participate in  
a volunteer roadside litter  
cleanup. Call 325-8741 to  
learn more.

SUNDAY	MONDAY	TUESDAY	WEDNESDAY	THURSDAY	FRIDAY	SATURDAY
					1	2 Groundhog Day
3	4	5	6	7	8	9
10	11	12	13	14 Valentine's Day	15	16
17	18 Presidents' Day	19	20	21	22	23
24	25	26	27	28		
			<b>SPECIAL EVENTS:</b> Register your community to participate in the Spring Cleanup through the Alabama People Against a Littered State. Call 325-8741 for more information. Attend Birmingham Botanical Garden's Annual Rose Pruning on Feb 16!			



JEFFERSON  
COUNTY  
CONSERVATION  
DISTRICT

# BIRMINGHAM SOUTHERN ECOSCAPE

## Valley Creek Watershed (Black Warrior Sub-Basin)

[Learn more about Sub-Basins and Watersheds on the last page!](#)

The Hugh Kaul EcoScape is a four acre outdoor classroom at the western edge of Birmingham Southern College Campus and forms part of Birmingham's Valley Creek watershed. The park is designed to minimize stormwater runoff. Specially selected plants and trees help filter pollutants from adjacent ball fields and parking lots. The native plants, sustainable landscape practices, and beautiful gathering places make the EcoScape a source of inspiration and learning. Over 12,000 school children tour this facility annually, which is managed by the Southern Environmental Center of Birmingham Southern College.

### Attractions:

Fragrance garden; sculptures; tree house

### Biggest threat to the watershed:

Stormwater runoff volume and velocity

### Solutions implemented:

Education; sustainable landscape practices

*Photo, Southern Environmental Center*



To report a sanitary sewer overflow call 205-942-0681.

Within the City of Birmingham call 311 to report environmental and drainage issues.

# MARCH 2019

Within unincorporated Jefferson County call 205-325-5792 to report suspected water pollution; call 205-582-6555 to report illegal dumping.

**STORMWATER TIP:**  
**Properly apply the correct lawn and garden products in the recommended amounts. Always follow and refer to label directions.**

The quality of the soil is a major factor in how lush and green a garden grows. Test your soil today.

Soil test kits are available at the AL Extension offices. Call 879-6964 to learn more.

Call a master gardener volunteer 1-877-252-GROW #3 for all of your gardening challenges.

Call the AL Extension's local plant diagnostic lab, 879-6964, to help identify pest and plant problems.

SUNDAY	MONDAY	TUESDAY	WEDNESDAY	THURSDAY	FRIDAY	SATURDAY
					1	2
3	4	5	6	7	8	9
10 Daylight Savings Time Begins	11	12	13	14	15	16
17 St. Patrick's Day	18	19	20 Lunch and Learn	21	22 World Water Day	23
24	25	26	27	28	29	30
31			<b>SPECIAL EVENTS:</b> Participate in a volunteer litter cleanup. Call 325-8741 for more information. March kicks off the FREE Lunch and Learn Seminars held at the Birmingham Botanical Gardens. Visit <a href="http://bbgardens.org/classes">bbgardens.org/classes</a> to learn more.			



JEFFERSON COUNTY CONSERVATION DISTRICT



# RUFFNER MOUNTAIN

## Shades and Village Creek Watersheds (Cahaba and Black Warrior Sub-Basins)

Learn more about Sub-Basins and Watersheds on the last page!

For nearly 75 years Ruffner Mountain's landscape was quarried and mined, but now it is 1,040 acres of protected habitat, open free to the public to hike and enjoy. It is home to hundreds of plant and animal species with several areas of distinct, high biodiversity. Ruffner's abundant lush native forest provides a significant benefit by capturing carbon, thereby improving air quality for the metropolitan area.

### Attractions:

17 hiking trails; historic mining sites; quarries; mineral rail line

### Special events:

April – Native plant sale

### Importance of conservation:

Ruffner strives to raise ecological awareness as Birmingham's premier resource for urban nature education.

### Biggest threat to the watershed:

Soil erosion; dumping and littering; stormwater runoff volume and velocity

### Solutions implemented:

Removing non-native plants; planting diverse native species to reduce sediment, flooding and erosion.

Photo, Bob Farley



Open Tuesday - Saturday 9:00am - 5:00pm; Sunday 1-5  
trails open daily dawn to dusk

1214 81st Street South, 35206

205-833-8264

www.ruffnermountain.org

To report a sanitary sewer overflow call 205-942-0681.

Within the City of Birmingham call 311 to report environmental and drainage issues.

Within unincorporated Jefferson County call 205-325-5792 to report suspected water pollution; call 205-582-6555 to report illegal dumping.

# APRIL 2019

**STORMWATER TIP:**  
**Follow directions and fertilize correctly!**  
**Any product left on the ground gets washed off by rainfall or irrigation which pollutes our creeks, rivers, and streams.**

Set your spreader to the recommended application rate by adjusting its dial to the number specified in the package directions.

Prevent added cleanup by avoiding the spread of fertilizer on paved areas.

Apply fertilizer when there is no chance of rain in the forecast.

The label is the LAW - use only the recommended amount.

SUNDAY	MONDAY	TUESDAY	WEDNESDAY	THURSDAY	FRIDAY	SATURDAY
	1 April Fool's Day	2	3 Lunch and Learn	4	5	6
7	8	9	10	11	12	13
14 Palm Sunday	15 Tax Day	16	17 Lunch and Learn	18	19 Good Friday	20
21 Easter Sunday	22 Earth Day	23	24	25	26 Arbor Day	27
28	29	30				
			<b>SPECIAL EVENTS:</b> Take advantage of the Birmingham Botanical Gardens Spring Plant Sale and the Ruffner Mountain Native Plant Sale this month! Attend <i>Earth Day at the Gardens</i> on April 20 - It is free and lots of fun!			



JEFFERSON COUNTY CONSERVATION DISTRICT

# CAHABA RIVER

## Cahaba River Watershed (Cahaba Sub-Basin)

Learn more about Sub-Basins and Watersheds on the last page!

The Cahaba River is the longest free flowing river in Alabama, providing natural beauty, recreation, and drinking water for the Birmingham area. It is home to the largest stand of imperiled shoal lilies in the world, which create a spectacular show of blooms each spring from Mother's Day to Father's Day. With 64 rare and threatened aquatic species and 131 species of fish, the Cahaba is one of the most biologically diverse rivers in the US. The Cahaba River National Wildlife Refuge is the best location to view the lilies.

### Attractions:

Canoe/kayak launch; swimming; fishing; walking trails; wildlife viewing

### Special events:

May: Cahaba Lily Festival ([www.cahabalily.com](http://www.cahabalily.com))

Oct: Cahaba River Fry-Down ([www.frydown.com](http://www.frydown.com))

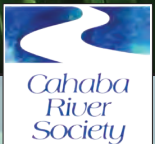
### Biggest threat to the watershed:

Stormwater runoff volume and velocity; erosion, siltation

### Solutions implemented:

Education, innovative stormwater practices, river bank & forest restoration

*Photo, Cahaba River Society*



National Wildlife Refuge is open daily dawn to dusk

River Trace, West Blockton

205-322-5326

[www.cahabariversociety.org](http://www.cahabariversociety.org)

To report a sanitary sewer overflow call 205-942-0681.

Within the City of Birmingham call 311 to report environmental and drainage issues.

Within unincorporated Jefferson County call 205-325-5792 to report suspected water pollution; call 205-582-6555 to report illegal dumping.

# MAY 2019

**STORMWATER TIP:**  
**Properly dispose of pet waste. It's not just courteous, it is also healthy and environmentally sound thing to do.**

Pet waste contains harmful bacteria. It is washed by rainfall and irrigation, and ends up polluting our creeks, rivers and streams.

150,000 dogs live in our area and produce 38 tons of waste per day.

Dog waste does not fertilize the grass and should never be added to compost. Always bag it and trash it. Placing waste in plastic bags generates heat, killing these pathogens.

SUNDAY	MONDAY	TUESDAY	WEDNESDAY	THURSDAY	FRIDAY	SATURDAY
			1 Lunch and Learn	2	3	4
5	6	7	8	9	10	11
12 Mother's Day	13	14	15 Lunch and Learn	16	17	18
19	20	21	22	23	24	25
26	27 Memorial Day	28	29 Lunch and Learn	30	31	
			<b>SPECIAL EVENTS:</b> Participate in a volunteer litter cleanup. Call 325-8741 for more information. Attend FREE Lunch and Learn Seminars or the Native Plant Conference held at the Birmingham Botanical Gardens this month. Visit <a href="http://bbgardens.org/classes">bbgardens.org/classes</a> .			



JEFFERSON COUNTY CONSERVATION DISTRICT

# BIRMINGHAM BOTANICAL GARDENS

## Shades Creek Watershed (Cahaba Sub-Basin)

Learn more about Sub-Basins and Watersheds on the last page!

With 67.5 acres of stunning plants, flowers, trees, water features and paths, Birmingham Botanical Gardens is the region's horticultural gem. The Gardens are open every day free of charge, and welcomes more than 350,000 visitors each year. Consider becoming a member to help support this local treasure!

### Attractions:

Ongoing plant conservation programs and resources; 3000+ taxa of plants; 25+ interpretive/thematic gardens; 30+ works of outdoor sculpture; the only public horticulture library in the US; meeting facilities, event venues

### Special events:

Spring and Fall Plant Sales; *Antiques in the Gardens*; weekly classes, programs and events; summer camps

### Biggest threat to the watershed:

Stormwater runoff volume/velocity; flooding

### Solutions implemented:

Stormwater infiltration, retention/ collection, biofiltration

Photo, Birmingham Botanical Gardens

To report a sanitary sewer overflow call 205-942-0681.

Within the City of Birmingham call 311 to report environmental and drainage issues.

Within unincorporated Jefferson County call 205-325-5792 to report suspected water pollution; call 205-582-6555 to report illegal dumping.

# JUNE 2019

**STORMWATER TIP:**  
**Properly apply bug killers. Insecticides kill all insects, even those you did not want to harm, such as our pollinators.**

Integrated pest management strategies are simple: identify the pest before reacting; choose the least toxic products first; spot treat; and avoid overspray.

All insects have a purpose. Many assist in helping keep plants healthy by eating bugs we consider to be bad pests.

Call the AL Extension's local diagnostic lab (879-6964 ext. 19) to help identify pest and plant problems.

SUNDAY	MONDAY	TUESDAY	WEDNESDAY	THURSDAY	FRIDAY	SATURDAY
						1
2	3	4	5 World Environment Day	6	7	8 World Oceans Day
9	10	11	12 Lunch and Learn	13	14	15 Rain Barrel Workshop
16 Father's Day	17	18	19	20	21	22
23	24	25	26 Lunch and Learn	27	28	29
30			<b>SPECIAL EVENTS:</b> Sign up to attend the <i>Rain Barrel Workshop</i> taking place on June 15. Rain Barrels are available for purchase. Pre-registration with the Birmingham Botanical Gardens is required. Visit <a href="http://bbgardens.org/classes">bbgardens.org/classes</a> for more information.			



JEFFERSON COUNTY CONSERVATION DISTRICT

# WILD TARO THREATENS LOCAL WATERWAYS!

It is traveling through the storm drain system.

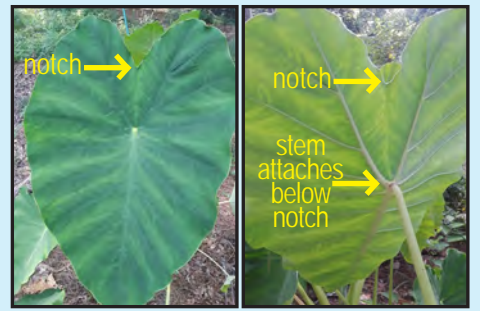
Prevent Wild Taro, *Colocasia esculenta*, from spreading!

Wild Taro is a non-native plant that is killing native stream bank and mid-stream plants by over-shadowing and by emitting toxins from its roots.

Taro is a popular landscape plant that spreads - quickly! When it does, homeowners thin Wild Taro out of planting beds and deposit it onto street curbs, where it washes into storm drains and is carried to local rivers and creeks.



While any species of taro may be invasive, the Wild Taro with solid green leaves (pictured above and right), is particularly aggressive. Wild Taro spreads rapidly by long rhizomes and corms, both forms of underground stems. A parent-plant sends out yards-long rhizomes that quickly generate new plants. In rivers and streams, these new plants break off easily and establish colonies downstream, increasing the challenge of removing them. If you have Wild Taro in your landscape, please consider removing it and replacing it with native plants.



## YOU CAN STOP WILD TARO FROM TAKING OVER OUR RIVERS!

Know what Wild Taro looks like and how to remove it safely.



**IDENTIFY** - its stem attaches below the notch, not at the notch like native Arrowhead leaves do.



**REMOVE** the entire plant including its roots & runners! Sap irritates skin - wear gloves!



**BAG** plants. Tightly seal bag so the roots and runners do not escape!



**DISCARD** in household trash for landfill disposal. Do not compost!

## GET INVOLVED!

Share information with friends, neighbors, and your local garden center - free brochures are available or printable from the web! Many people do not know that this common landscaping plant can be such a hazard to our environment. Cahaba River Society and the Birmingham Botanical Gardens have worked together to produce a brochure and speaker tour that can help bring information about invasive taro to landscape and garden professionals and enthusiasts.

Contact [info@cahabariversociety.org](mailto:info@cahabariversociety.org) or call 205-322-5326 to request a presentation for your group.

**Schedule a Wild Taro removal project** with your group (clubs, business, faith based).

Email [clean@cahabariversociety.org](mailto:clean@cahabariversociety.org) or call 205-322-5326 ext. 420 for more information.

DOWNLOAD A PRINTABLE VERSION ONLINE AT [WWW.SAVETHECAHABA.ORG/TARO](http://WWW.SAVETHECAHABA.ORG/TARO)



# TURKEY CREEK NATURE PRESERVE

## Turkey Creek Watershed (Black Warrior Sub-Basin)

Learn more about Sub-Basins and Watersheds on the last page!

If you are looking for natural wonders, Turkey Creek Nature Preserve is a must see! The 466-acre Preserve boasts some of the most unique beauty found in the Southeast and is home to 7 federally protected species, including 3 critically endangered fish species. Educational programs are offered to promote preservation, and restoration projects are conducted to improve and protect this sensitive ecological system.

### Attractions:

5 trails; overlooks; swimming; catch and release fishing

### Special events:

July - Float Your Boat Summer Festival

### Biggest threat to the watershed:

Stormwater runoff volume and velocity; sediment and its effects on the creek bed structure and habitat.

### Solutions implemented:

Removing non-native plants; reducing stormwater runoff on the property; encouraging proper trash disposal.

Photo, Charles Yeager



Open Wednesday - Sunday 9:00am - 5:30pm

3609 Turkey Creek Road, 35126

205-680-4116

www.TurkeyCreeknp.com



To report a sanitary sewer overflow call 205-942-0681.

Within the City of Birmingham call 311 to report environmental and drainage issues.

Within unincorporated Jefferson County call 205-325-5792 to report suspected water pollution; call 205-582-6555 to report illegal dumping.

# JULY 2019

**STORMWATER TIP:  
Reduce storm water runoff by keeping rain from leaving your property.**

Runoff carries lawn products and loose soil to our creeks, rivers and streams causing water pollution.

Direct sprinklers and downspouts onto lawns, not driveways or sidewalks.

Enhance rain water retention: aerate the lawn, amend the soil, and add mulch.

Add or reapply mulch to garden beds and natural areas to retain moisture, suppress weeds, and reduce the frequency of watering.

SUNDAY	MONDAY	TUESDAY	WEDNESDAY	THURSDAY	FRIDAY	SATURDAY
	1	2	3	4 Independence Day	5	6
7	8	9	10 Lunch and Learn	11	12	13
14	15	16	17	18	19	20
21	22	23	24 Lunch and Learn	25	26	27
28	29	30	31			
				<b>SPECIAL EVENTS:</b> Attend Float Your Boat Summer Festival this month at Turkey Creek Nature Preserve - it's free and fun! Visit <a href="http://www.turkeycreeknp.com">www.turkeycreeknp.com</a> to learn more.		



JEFFERSON COUNTY CONSERVATION DISTRICT

# ROEBUCK SPRINGS / DON HAWKINS PARK

## Village Creek Watershed (Black Warrior Sub-Basin)

[Learn more about Sub-Basins and Watersheds on the last page!](#)

Roebuck Springs is home to the watercress darter, a federally-endangered fish found only in Jefferson County. Roebuck Springs is one of several natural springs in the county that provides the cool, clear, flowing water needed for darter species to thrive. The spring is located in the middle of Birmingham's 113.29 acre Hawkins Park and is an example of sensitive wildlife habitat existing within an urban environment. Through a joint partnership with the Freshwater Land Trust and US Fish and Wildlife, the City of Birmingham protects the waterway and allows Roebuck Springs to thrive in a serene park whose elements help protect water quality.

### Attractions:

Habitat for rare and endangered fish;  
Don Hawkins Recreation Center;  
Roebuck Golf Course

### Biggest threat to the watershed:

Stormwater runoff volume and velocity; erosion; flooding

### Solutions implemented:

Removed asphalt; installed bioswales; native plants to help buffer stream and cool runoff water

*Photo, Freshwater Land Trust*



To report a sanitary sewer overflow call 205-942-0681.

Within the City of Birmingham call 311 to report environmental and drainage issues.

Within unincorporated Jefferson County call 205-325-5792 to report suspected water pollution; call 205-582-6555 to report illegal dumping.

# AUGUST 2019

**STORMWATER TIP:  
Properly dispose of  
unused items in the trash  
and cover trash cans to  
keep out wind and  
animals.**

Secure all items before driving and do not toss anything out of the windows.

Trash that falls out or blows out of vehicles or trailers becomes litter. Litter on the ground can be washed by rainwater into the storm drainage system and carried untreated to local creeks and streams.

Coordinate or participate in a volunteer roadside litter cleanup. Call 325-8741 to learn more.

SUNDAY	MONDAY	TUESDAY	WEDNESDAY	THURSDAY	FRIDAY	SATURDAY
				1	2	3
4	5	6	7 Lunch and Learn	8	9	10
11	12	13	14	15	16	17
18	19	20	21 Lunch and Learn	22	23	24
25	26	27	28	29	30	31
			<b>SPECIAL EVENTS:</b> Attend FREE Lunch and Learn Seminars held at the Birmingham Botanical Gardens. Visit <a href="http://bbgardens.org/classes">bbgardens.org/classes</a> to learn more.			



JEFFERSON COUNTY CONSERVATION DISTRICT

# RED MOUNTAIN PARK

## Shades Creek Watershed (Cahaba Sub-Basin);

## Village and Valley Creek Watersheds (Black Warrior Sub-Basin)

*Learn more about Sub-Basins and Watersheds on the last page!*

Whether it's zipping 40 feet above Red Mountain, enjoying one of three tree houses, or hiking and biking on 15 miles of trails, Red Mountain Park is packed with both beauty and adventure. The 1500 acre park has successfully restored forest and stream habitats which are home to 98 bird species, and wildlife such as bobcats and crawfish.

### **Attractions:**

Aerial Adventures; 15 miles of hiking and mountain biking trails; 6-acre Remy's Dog Park; Team Building; Historic Iron Ore Mining Ruins; Treehouses and Scenic Overlooks; Butler Snow Sensory Trail

### **Biggest threat to the watershed:**

Trash, littering, and illegal dumping; invasive plants

### **Solutions implemented:**

Gates installed to prevent illegal dumping; volunteer trash pickup events; goats used to remove invasive plants.

*Photo, Red Mountain Park*



RED MOUNTAIN PARK

Open daily 7:00am - 5:00pm; Summer until 7

| 2011 Frankfurt Drive, 35211

| 205-202-6043

| [www.redmountainpark.org](http://www.redmountainpark.org)

To report a sanitary sewer overflow call 205-942-0681.

Within the City of Birmingham call 311 to report environmental and drainage issues.

Within unincorporated Jefferson County call 205-325-5792 to report suspected water pollution; call 205-582-6555 to report illegal dumping.

# SEPTEMBER 2019

**STORMWATER TIP:**  
Keep leaves out of roadways, roadside ditches, and storm drains. Leaves in these areas block rain from entering storm drains causing flooding.

Instead of piling your leaves or grass clippings at the curb, start looking at them as a valuable resource, rather than a nuisance. Use them as mulch or in a compost pile.

Mulch enhances soil by supplying micronutrients, stabilizing soil temperature, retaining moisture and reducing weed growth.

SUNDAY	MONDAY	TUESDAY	WEDNESDAY	THURSDAY	FRIDAY	SATURDAY
1	2 Labor Day	3	4 Lunch and Learn	5	6	7
8	9	10	11	12	13	14
15	16	17	18 Lunch and Learn	19	20	21
22	23	24	25	26	27	28
29 World Rivers Day	30					
			<b>SPECIAL EVENTS:</b> Plan to shop the Birmingham Botanical Gardens Fall Plant sale this month! Make plans to participate in either the Shades Creek Fall Litter Cleanup or the Village Creek Fall Litter Cleanup this month. Call 325-8741 for more information.			



JEFFERSON COUNTY CONSERVATION DISTRICT

# BROOKSIDE GREENWAY PARK

## Five Mile Creek Watershed (Black Warrior Sub-Basin)

Learn more about Sub-Basins and Watersheds on the last page!

Five Mile Creek offers 26 miles of Alabama's finest spring and early summer canoeing and kayaking with four primary paddling routes. Adjacent to Five Mile Creek is the beautiful Brookside Greenway Park which offers improved and primitive camping sites as well as a stunning array of bird habitats. Owned by the Town of Brookside, the Five Mile Creek Canoe Company rents paddling equipment, books tours, and reserves campground space. Shuttle services are available reservations required.

### Attractions:

Canoeing and kayaking rentals; camping (shower and restrooms); playground, fishing, swimming, 4-miles of walking and birding trails

### Special events:

Oct: bike race (BAMAcross Brookside Rumble)  
Nov: St. Nicholas Russian Food Festival

### Biggest threat to the watershed:

Dumping of trash, tires, debris

### Solutions Implemented:

Greenway, creekside buffers

Photo, Francesca Gross



To report a sanitary sewer overflow call 205-942-0681.

Within the City of Birmingham call 311 to report environmental and drainage issues.

Within unincorporated Jefferson County call 205-325-5792 to report suspected water pollution; call 205-582-6555 to report illegal dumping.

# OCTOBER 2019

**STORMWATER TIP:  
Compost yard waste into  
free mulch!**

Fallen leaves quickly decompose, making natural fertilizer and mulch. Mulch smothers weeds, helps soil retain moisture, and reduces soil erosion.

Chop up fallen leaves with your lawnmower. The leaf bits will decompose and provide free fertilizer.

Winterize your plants and natural areas by applying your fallen leaves as mulch.

Now is the best time to plant trees, shrubs, and other additions to the landscape.

SUNDAY	MONDAY	TUESDAY	WEDNESDAY	THURSDAY	FRIDAY	SATURDAY
		1	2	3	4	5
6	7	8	9	10	11	12
13	14 Columbus Day	15	16	17	18	19
20	21	22	23	24	25	26
27	28	29	30	31 Halloween		
			<b>SPECIAL EVENTS:</b> Make plans this month to attend the <i>BAMAcross Brookside Rumble Bike Races, Cahaba River Fry Down and Antiques at the Birmingham Botanical Gardens!</i>			



JEFFERSON COUNTY CONSERVATION DISTRICT

# AEC'S COMMUNITY RECYCLING CENTER

# RECYCLE ALABAMA



## Village Creek Watershed (Black Warrior Sub-Basin)

Learn more about Sub-Basins and Watersheds on the last page!

Have recycling needs? The Community Recycling Center has solutions! The Center provides area residents an ongoing opportunity for recycling a variety of items. Knowledgeable staff also can help your business, school or event with on site and long term recycling options. The Center offers educational workshops, tours, and assistance with sustainability best practices. The Community Recycling Center is a program of the Alabama Environmental Council (AEC), a statewide, non-profit leader engaging citizens toward sustainable living and environmental stewardship. Quickly learn where and how to recycle most items at [www.recycAL.org](http://www.recycAL.org).

### Special Events:

April - Green Tie Affair

### Biggest threat to the watershed:

Litter and illegal dumping

### Solutions implemented:

Providing programs and initiatives to preserve, protect and promote a healthy Alabama for a sustainable future.

*Photo, Alabama Environmental Council*



Open Tuesday - Friday 10:00am - 2:00pm ; Saturday 9 - 4 | 4330 1st Avenue South, 35222 | 205-252-7581 | [www.aeconline.org/recycAL](http://www.aeconline.org/recycAL)



To report a sanitary sewer overflow call 205-942-0681.

Within the City of Birmingham call 311 to report environmental and drainage issues.

Within unincorporated Jefferson County call 205-325-5792 to report suspected water pollution; call 205-582-6555 to report illegal dumping.

# NOVEMBER 2019

**STORMWATER TIP:  
Properly dispose of your  
used cooking oil and  
grease for free!**

Fats, oils and grease poured down drains build up in pipes causing backups in homes and overflows into storm drains, creeks, rivers, and streams. Backups and overflows are costly to repair, smell bad, and look even worse.

New, clean recycling containers are available for FREE at all Jefferson County collection centers. Visit [www.jeffcoes.org](http://www.jeffcoes.org) to find a location near you.

Call 238-3876 for more information about Jefferson County's Household Cooking Oil and Grease Recycling Program.

SUNDAY	MONDAY	TUESDAY	WEDNESDAY	THURSDAY	FRIDAY	SATURDAY
					1	2
3 Daylight Savings Time Ends	4	5 Election Day	6	7	8	9
10	11 Veterans Day	12	13	14	15 America Recycles Day	16
17	18	19	20	21	22	23
24	25	26	27	28 Thanksgiving Day	29	30
			<b>SPECIAL EVENTS:</b> Make plans this month to attend the St. Nicholas Russian Food Festival in Brookside.			



JEFFERSON  
COUNTY  
CONSERVATION  
DISTRICT

# BIRMINGHAM ZOO

## Shades Creek Watershed (Cahaba River Sub-Basin)

Learn more about Sub-Basins and Watersheds on the last page!

The Birmingham Zoo is Alabama's top attraction, drawing over 600,000 visitors annually. The Zoo is a world leader in conservation study and an ambassador for the preservation of wild animals and their natural environment. The Zoo is constantly striving to *inspire passion to conserve the natural world* aiming to create a global community where all people value wildlife. Nearly 950 animals of 230 species call the 122 acre Birmingham Zoo home, including endangered species from 6 continents. Come and learn how important clean waterways are to our otters!

### Attractions:

Trails of Africa; educational programs

### Special Events:

January - Christmas tree recycling  
Oct - Boo at the Zoo; Dec - Zoolight Safari

### Biggest threat to the watershed:

Flooding; trash

### Solutions implemented:

Creating educational exhibits to expand minds and increase familiarity; detention ponds; litter cleanups; recycling initiatives

Photo, Birmingham Zoo



Open Monday - Sunday 9:00am - 5:00pm

2630 Cahaba Road, 35223

205-879-0409

[www.birminghamzoo.com](http://www.birminghamzoo.com)

To report a sanitary sewer overflow call 205-942-0681.

Within the City of Birmingham call 311 to report environmental and drainage issues.

Within unincorporated Jefferson County call 205-325-5792 to report suspected water pollution; call 205-582-6555 to report illegal dumping.

# DECEMBER 2019

**STORMWATER TIP:  
Properly dispose of your  
used cooking oil and  
grease for free!**

Rats, raccoons, opossums, and other vermin will feed on any type of grease, oil or other food waste that you place uncovered outside your home.

Jefferson County offers free, convenient, and easy household oil and grease recycling. Visit [www.jeffcoes.org](http://www.jeffcoes.org) to find a collection center near you.

Call 238-3876 for more information about Jefferson County's Household Cooking Oil and Grease Recycling Program.

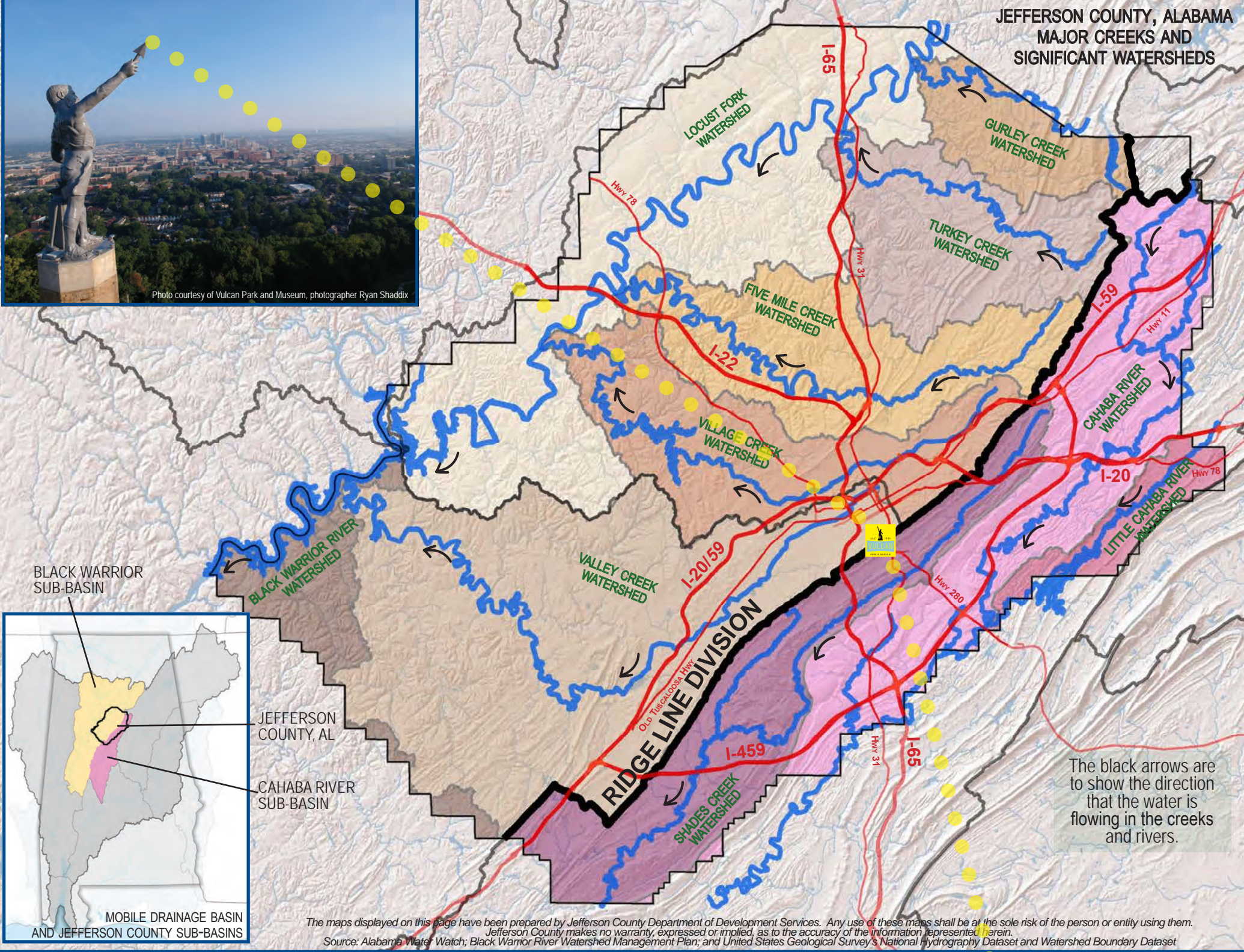
SUNDAY	MONDAY	TUESDAY	WEDNESDAY	THURSDAY	FRIDAY	SATURDAY
1	2	3	4	5	6	7
8	9	10	11	12	13	14
15	16	17	18	19	20	21
22	23	24 Christmas Eve	25 Christmas Day	26	27	28
29	30	31 New Year's Eve				
			<b>SPECIAL EVENTS:</b> Recycle your old electronics. Visit <a href="http://www.aeonline.org/recycAL">www.aeonline.org/recycAL</a> to learn more. Recycle your Christmas trees at the Birmingham Zoo. More information is available at <a href="http://www.birminghamzoo.com">www.birminghamzoo.com</a> .			





Photo courtesy of Vulcan Park and Museum, photographer Ryan Shaddix

JEFFERSON COUNTY, ALABAMA  
MAJOR CREEKS AND  
SIGNIFICANT WATERSHEDS



The black arrows are to show the direction that the water is flowing in the creeks and rivers.

The maps displayed on this page have been prepared by Jefferson County Department of Development Services. Any use of these maps shall be at the sole risk of the person or entity using them. Jefferson County makes no warranty, expressed or implied, as to the accuracy of the information represented herein. Source: Alabama Water Watch; Black Warrior River Watershed Management Plan; and United States Geological Survey's National Hydrography Dataset and Watershed Boundary Dataset

A drainage **BASIN** is a large area of land drained by rivers. Large Basins are made up of Sub-Basins. **SUB-BASINS** are made up of Watersheds. A **WATERSHED** is a land area whose elevation causes water to flow to a common waterway. Neither Basins nor Watersheds follow State or Municipal Boundaries. They are defined by mountain ridges and valleys.

**Threats to Watersheds and Waterways**

Clean water in our local rivers, creeks, lakes, and streams is important to human, animal, and environmental health. In a natural environment, rainwater has many opportunities to sink into the ground or slowly flow into a waterbody. Because we have built more and more roads, homes, and businesses over the years, rainwater has fewer chances to infiltrate. This process creates large amounts of rainwater moving very quickly across hard surfaces, through the drainage system, and into water bodies. Fast moving water can pick up many pollutants from the ground.

These pollutants can come from numerous sources, including motor oil, fertilizers, pesticides, heavy metals, eroded soil, sewage, pet waste, and litter. Industrial and commercial operations also can contribute to water pollution. These pollutants regularly enter our waterbodies when they are picked up and carried by rain. Large amounts of fast moving water can overwhelm drainage systems. When this occurs, streets flood and stream banks erode.

Alabama establishes levels for the maximum amount of pollutants that can enter each waterbody. Local Stormwater Program staff monitor these water bodies to ensure that they do not exceed the maximum level. If they do, measures are taken to identify the source of the pollutant and reduce or eliminate it.

Below are actions to consider that help protect our local water quality.



Sweep up excess yard chemicals.



Read and follow label directions.



Fix and repair vehicle leaks.



Pick up and dispose of pet waste.



Recycle used cooking oil.



Secure loose items before driving.



Cover bare soil to prevent erosion.



Participate in a litter cleanup.



Photo courtesy of Vulcan Park and Museum, photographer Ryan Shaddix

Overlooking the sites where coal, iron ore, and limestone were mined and a booming manufacturing sector was born, Vulcan proudly towers over the 1,119 square miles that make up the Birmingham-Jefferson County Metro Area. The abundance of clean, fresh water was a crucial factor in Birmingham's dramatic rise as a mining and manufacturing center during the late 1800s. The water that enabled that growth remains a vital component to the future progress and the vitality of our region. Vulcan Park sits atop Red Mountain, which is part of the Red Mountain Divide, a southern extension of the Appalachian Mountains and the Cumberland Plateau. This geological feature creates two main drainage Sub-Basins: the Black Warrior Sub-Basin and the Cahaba Sub-Basin. The Vulcan statue faces the Black Warrior Sub-Basin and the Cahaba Sub-Basin is behind Vulcan. Within these two major Sub-Basins are nine Watersheds: Black Warrior River, Cahaba River, Five Mile Creek, Gurley Creek, Little Cahaba River, Shades Creek, Turkey Creek, Valley Creek, and Village Creek.

**CITY OF BIRMINGHAM    JEFFERSON COUNTY COMMISSION**



**Calendar designed by City of Birmingham Stormwater Management and Jefferson County Stormwater Program  
Printing provided by the City of Birmingham Print Shop  
Photo courtesy of Vulcan Park and Museum, *photographer Ryan Shaddix***

## Berres, Hana

---

**From:** Cooper, Direcus D. <Direcus.Cooper@birminghamal.gov>  
**Sent:** Tuesday, November 20, 2018 1:09 PM  
**To:** Berres, Hana  
**Cc:** DiClemente, Lyn; Perry, Troy J.; Jackson, Whitney R.  
**Subject:** RE: calendars

Hana,

We purchased 3000 calendars. We have received in 17 boxes  
At this time we have broken up the boxes received 7 to 10, Birmingham with 10. We can offer two more boxes if that seems fair since you all gave calendars to all vendors. That gives you all 9 boxes and us 8.

I also had Troy and Whitney to continue to count. She has randomly opened 3 boxes equaling: ( 200, 157, 197) and averaging 184 per box. This leads us to think that we did receive 3000 calendars within 17 boxes with the rough average of 176 per box.

Thanks,

### Direcus Cooper MSEM

*Storm Water Specialist*

Planning, Engineering & Permits

City of Birmingham

p: 205.254.7771 m: 205.706.8431

f: 205.297.8209

a: 710 North 20th St, Rm 202

Birmingham AL 35203

w: [www.birminghamal.gov](http://www.birminghamal.gov) e: [direcus.cooper@birminghamal.gov](mailto:direcus.cooper@birminghamal.gov)



## PUTTING PEOPLE FIRST

[WWW.BIRMINGHAMAL.GOV](http://WWW.BIRMINGHAMAL.GOV)



---

**From:** Berres, Hana [mailto:[Hana.Berres@jccal.org](mailto:Hana.Berres@jccal.org)]  
**Sent:** Monday, November 19, 2018 5:45 PM  
**To:** Cooper, Direcus D. <Direcus.Cooper@birminghamal.gov>  
**Cc:** DiClemente, Lyn <[Lyn.Diclemente@jccal.org](mailto:Lyn.Diclemente@jccal.org)>  
**Subject:** calendars

Hey Direcus!

Ok, it was basically 150 calendars per box. You gave us a total of 7 boxes – this includes the one you gave to Lyn at Bessemer. We have distributed most of the calendars to our partners – am

waiting on 3 to respond to me. (Red Mountain, Bham Southern and Turkey Creek). Including Extension and Conservation District that adds to 325 or 2 boxes.

I am out of calendars ... well down to one box and was hoping you have boxes to spare. Did you actually print 3,000?

Anyhoo – if you have to give then can you please give us 4 boxes? That would equal our 1,500.

**Hana Burwinkle Berres**

Education Training Coordinator

Planning Engineering Permitting Division, Development Services Department

Room B-200 Jefferson County Courthouse, Birmingham 35203

205.325.8741

[Hana.Berres@jccal.org](mailto:Hana.Berres@jccal.org)

*From the roof to the stream, you can prevent the pollution in between!*

